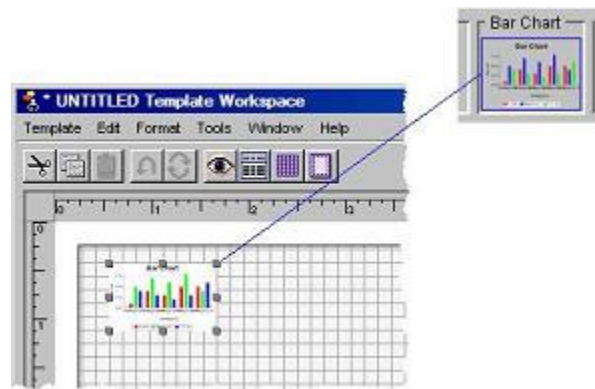
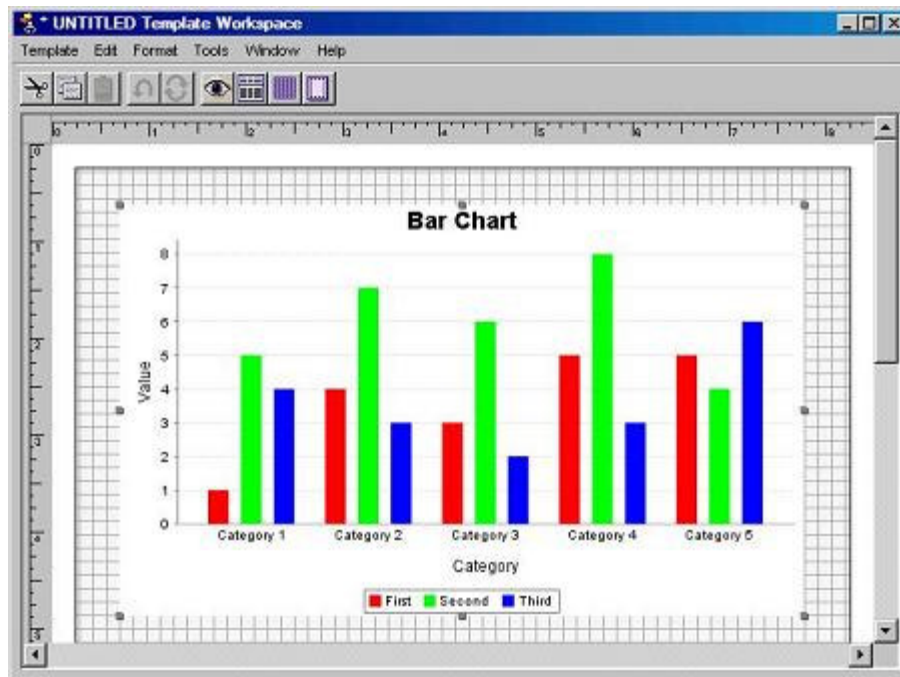


## Tutorial 9 - Building the ProductSalesBarChart Print Template

We will create a simple Print Template with one component, Bar Chart, to be used in a number of Report Procedures in subsequent Tutorials. Open the new Print Template Workspace window, and drag the Bar Chart component from the Palette into the Workspace:

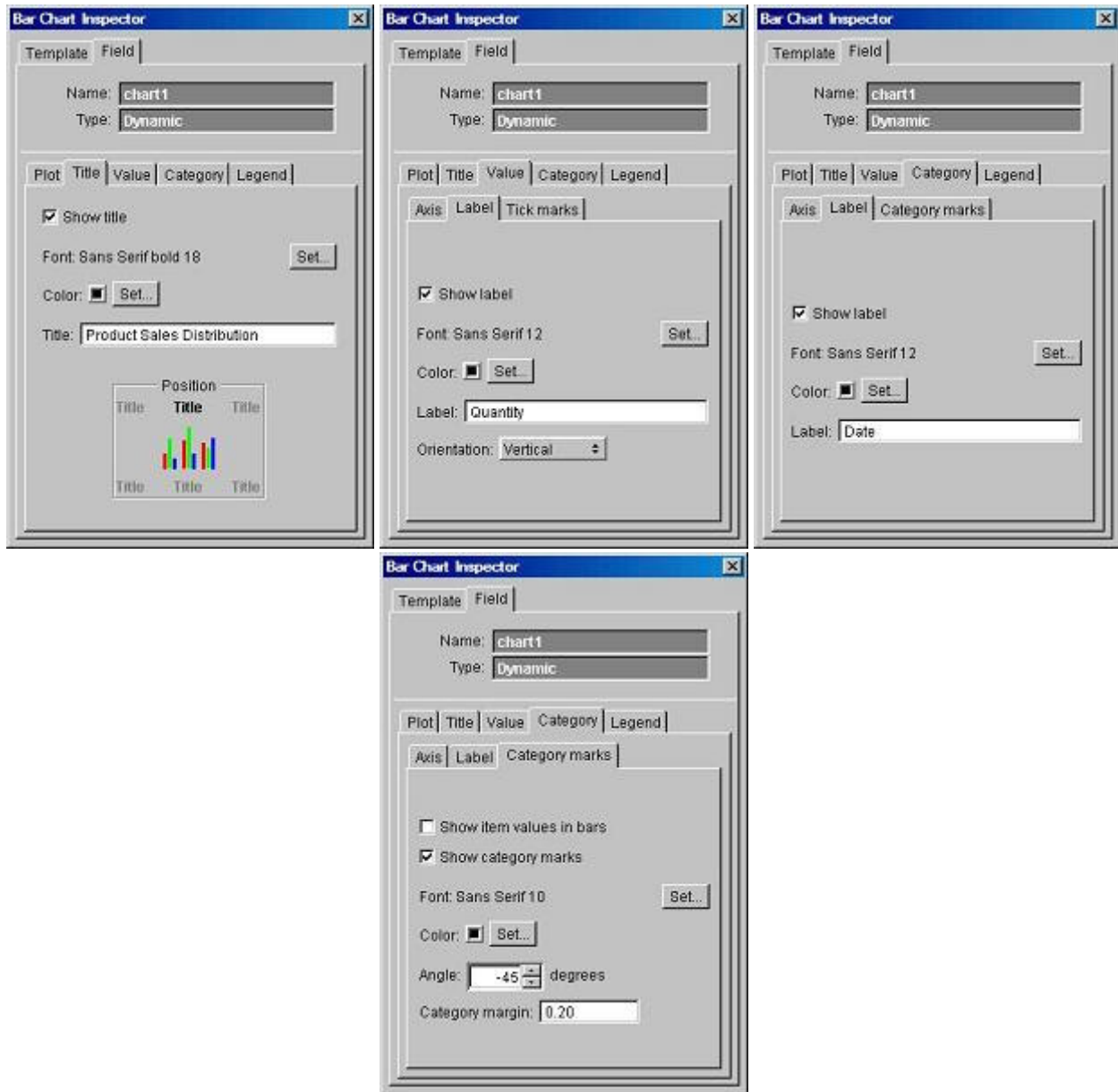


Resize the Bar Chart component to a larger size:

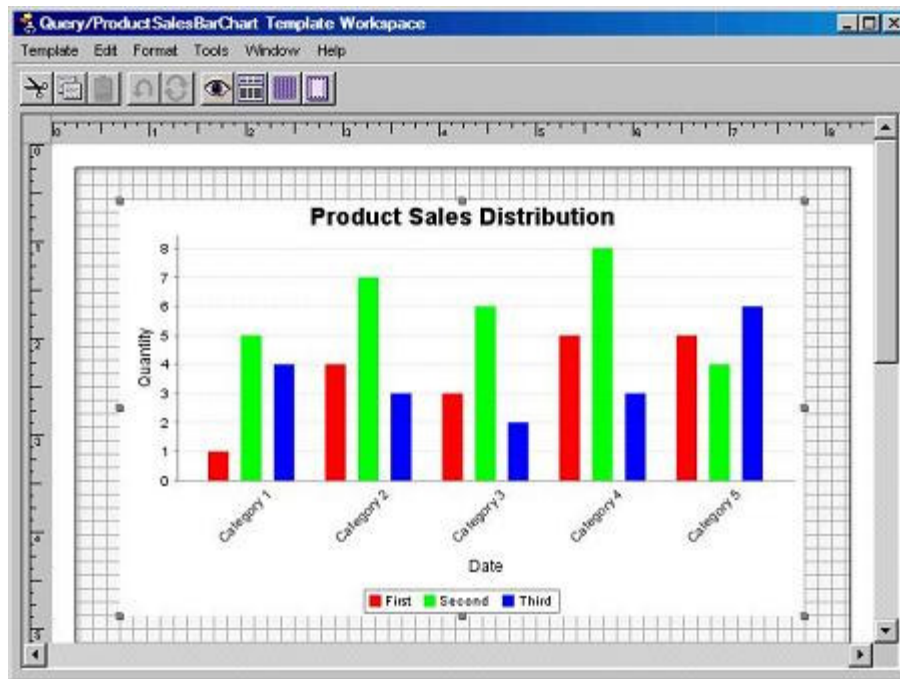


We will make a number of changes to the default settings of the Bar Chart component:

- Set the chart Title to "Product Sales Distribution"
- Set axis labels to "Quantity" and "Date"
- Change the orientation of Category marks to -45 degrees



After the changes, the Bar Chart component should look like this:



Note that when the Bar Chart component was dragged into the Workspace, a new field name was added to Palette: chart1. This is a default name assigned to the component by Scribe; the next Chart (Pie, Bar or Line), added to the template, would get the name "chart2", and so on. We could rename it using the technique described in Tutorial 4, but in this Tutorial we will just leave it to the default.

Also note that the bars, category marks and axis ranges shown in the component are merely placeholders; the actual content of the Bar Chart will be set at the run-time in the Report Procedure.

The field "chart1" becomes a handle to the Bar Chart; the Report Procedure will use this handle to link it to the procedure variable formatted by an appropriate component (see Tutorial 10).

Mark the template segment as "Body", and save the Print Template as Query/ProductSalesBarChart.