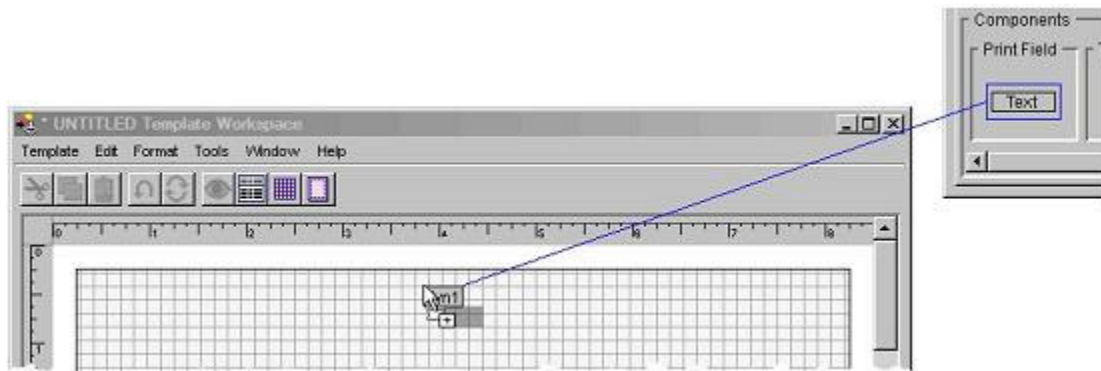


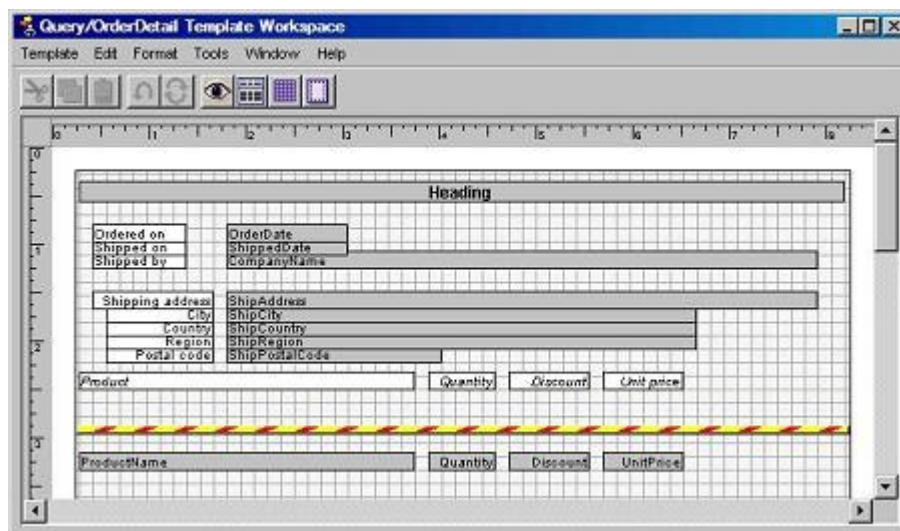
Tutorial 5 - Building the OrderDetail Print Template

In this template we will make use - for the first time - of a dynamic (i.e. non-table) print field. Drag the Print Field component from the bottom left corner of the Palette window:



Once the field lands, resize it to fill the width of the entire template, center it using the Inspector Alignment controls, and set its font to Sans Serif Bold 12. Rename the field from "dyn1" to "Heading". The technique for renaming variables is described in Tutorial 4, and works the same way on print fields.

The OrderDetail report prints the content of a given order, including the detailed info on each ordered product. The complete print template is shown in the figure below:



In this template, unlike the previous two, print fields come from a variety of tables:

| <i>Segment</i> | <i>Field</i> | <i>Comes from table</i> |
|----------------|--------------|-------------------------|
| Header | OrderDate | Orders |
| | ShippedDate | Orders |
| | CompanyName | Shippers |
| | ShipAddress | Orders |
| | ShipCity | Orders |
| | ShipCountry | Orders |
| | ShipRegion | Orders |

| | | |
|------|----------------|---------------|
| | ShipPostalCode | Orders |
| Body | ProductName | Products |
| | Quantity | Order_Details |
| | Discount | Order_Details |
| | UnitPrice | Order_Details |

The fonts used in this template are the same as before: Sans Serif Regular (or Italic) 10 for all fields except Heading. Note that some of the fields use right alignment set in the Inspector.

Save the Print Template as Query/OrderDetail.